

# CONCRETE SOLUTIONS

## CON-KORITE™ XTRA MORTAR

CON-KORITE is a "pure cement", fast-setting, extra abrasion resistant, high-strength and non-shrink mortar. It can be used as an interior/exterior patching material or to level concrete surfaces. It can also be used for floor overlays and grouting. When mixed with water, it produces a uniform, trowel-able mortar. When mixed with **KB25 ACRYLIC RESIN**, it produces a repair with very good resistance to absorption by corrosive compounds.

### Typical Coverage at 1/4 inch (.64 cm) per 55 lb.:

- 25 sq. ft. (2.3 m<sup>2</sup>) unextended
- 50 sq. ft. (4.6 m<sup>2</sup>) mixed 1:1 with pea gravel or small rock (Grouting holes and deep areas over 1 inch).

## •KB25 ACRYLIC RESIN™

CON-KORITE can be used with water only. However, for added resistance to absorption and to provide a greater bond for overlays, CON-KORITE can be combined with KB25 ACRYLIC RESIN. Just add the resin to water and then mix with the mortar and apply to the substrate as a primer.

**General Use:** 1 part KB25 to 2 parts water.

**Edging, corrosive elements exposure and thin repairs:**  
Use straight KB25.

**To grout over 1 inch (5 cm):** Use water only.

Each 55 lb. (25 kg) Bag requires about 1 to 1.25 gal. (3.8 L to 4.75 L) of mixing liquids.

Add **SET CONTROL** to mixing liquids during warm weather to extend the working time. One pouch per 55 lbs. (25 kg) mortar or 1 gal. (3.8 L) of mixing liquids.

## •CON-KORITE™ XTRA PLUS KIT

With PLUS KITS, KB25 is included in the kit.

**#KB0100 60 lb. (27.2 kg) Kit**—This convenient kit is the best way to get started!

Pail contains 55 lb. (25 kg) bag mortar, 2 qts. (1.9 L) **KB25, 1-SET CONTROL.**

**#KB0100-10 10 lb. (4.5 kg) CON-KORITE PLUS KIT**—

Pail contains 10 lb. (4.5 kg) bag mortar and **KB25** liquids.

## •COMPONENTS (Order separately for larger jobs.)

**#KB0060 55 lb. (25 kg) Bag CON-KORITE**

**#KB0061 55 lb. (25 kg) Pail CON-KORITE**

**#KB0060B 3000 lb. (1.36 tonne) Bulk Bag CON-KORITE**

**#KB0026 1 gal. (3.8 L) Jug KB25 (4/cs)**

**#KB0027 5 gal. (19 L) Pail KB25**

**#KB0001 SET CONTROL Pouch**

### Typical KB25 Needed:

- 1 gal. (3.8 L) KB25 per three 55 lb. (25 kg) mortar at 1:2 mix with water.
- 1 gal. KB25 per 55 lb. (25 kg) mortar using straight resin.

### Typical SET CONTROL Use:

- 1 Pouch per 55 lbs. (25 kg) mortar or 1 Gallon (3.8 L) mixing liquids.



## ARMOR-ROCK™ EPOXY OVERLAY

**VSC ARMORCOAT EPOXY** is combined with natural silica aggregates to produce an extremely hard tough-wearing uniform textured overlay for new or slightly eroded (less than 1/2 inch wear) slats and floors. It is highly resistant to the acids produced by animal and feed wastes. Since 1989 producers have found the **ARMOR-ROCK** system to be the longest lasting solution for restoring and protecting concrete around feeders and waterers (especially on 'new' slats!) and on floors. If high acid levels are forming, use the harder and highly acid-resistant **ARMORCOAT 3800 ADVANCED POLYMER EPOXY FORMULA**. Unlike mats, wastes flow off the slats removing acids that erode the surface. It's simple to use too. Just mix, add admix, pour onto the substrate and spread. Broadcast aggregate into the wet epoxy to create a uniform, non-slip surface. Use the convenient **ARMOR-ROCK APPLICATOR** for uniform slat repairs.

### #AC133-AR ARMOR-ROCK KIT

Contains 1.5 gal. (5.7 L) epoxy, 25 lbs. (11.4 kg) admix and 25 lbs. (11.4 kg) broadcast.

### #AC3800-AR ARMOR-ROCK 3800 KIT

Contains 1.362 gal. (5.18 L) epoxy, 25 lbs. (11.4 kg) admix and 25 lbs. (11.4 kg) **VSC G-Diamond** broadcast.

### Typical Coverage:

28 sq. ft. (2.6 m<sup>2</sup>) per 1.5 gal. (5.7 L) unit combined with 25 lbs. (11.4 kg) **VSC ADMIX** and 25 lbs. (11.4 kg) **VSC MEDIUM AGGREGATE** Broadcast at 3/16 inch (.43 cm).

## •COMPONENTS (For larger jobs.)

**#TSAR-6 ARMOR-ROCK APPLICATOR** (For 5" or 6" wide slats.)

**#TSFECSE-6H SPECIAL SLAT SQUEEGEE FOR ARMOR-ROCK APPLICATION**  
Notched, 6 inch (15.2 cm) squeegee with handle.

**#AC133 ARMORCOAT 1300** 1.5 gal. (5.7 L)

Or, **#AC3800 ARMORCOAT 3800** 1.362 gal. (5.18 L)

**#520B-25 ADMIX** 25 lb. (11.4 kg)

**#210-520B VSC MEDIUM** 50 lb. (22.8 kg)

### NON-SLIP OVERLAYS

- Feeder Pad
- Load-Out Ramps
- Slat
- Floors

### SMOOTH OVERLAYS

- Troughs

## ARMOR-STONE™ EPOXY MORTAR

**ARMORCOAT EPOXY** is combined with **ES NATURAL SAND BLEND** to form a trowel-applied mortar. Is is the most durable and chemical- resistant repair for broken slat edges and severely eroded concrete.

### Typical Coverage:

18 sq. ft. (1.7 m<sup>2</sup>) at 1/4 inch (.64 cm) per kit.

### #AC133-AG KIT (Natural)

Includes .6 gal. (2.3 L) Epoxy and 35 lbs. (16 kg) ES Natural Aggregate

*Thorough mixing and professional application guidelines are provided.*



### AGGREGATE USE GUIDE

#### Gestation and Growing Animals:

- **VSC MEDIUM** #210-520B-25 25 lb. (11.4 kg) Bag

#### Loading Chutes:

- **VSC ES NATURAL Blend** #82801-35N 35 lb. (15.9 kg) Bag
- **VSC G-DIAMOND Blend** (#82900-35N 35 lb. (15.9 kg) Bag



## ARMORCOAT™ 1300 EPOXY COATING

This two component epoxy is the work horse in the **VSC COATINGS** line. It is best known for its gloss, chemical resistance and durability. Medium gray and clear are standard. Clear can be combined with a variety of color additives.

### Typical Coverage:

150 sq. ft. (37 m<sup>2</sup>) per gal. over primer.

**#AC133** 1.5 gal. (5.7 L) Kit CLEAR

**#AC133-15** 15 gal. (57 L) Kit CLEAR

**#AC133G** 1.5 gal. (5.7 L) Kit MED. GRAY

**#AC133G-15** 15 gal. (57 L) Kit MED. GRAY



SHOPS & WAREHOUSING



OFFICES & MEETING ROOMS

## MIXING SUPPLIES

### 4" Prop Mixer for Epoxy Resins

**#TS46565** 4-inch Prop Mixer

For thorough mixing of high performance materials. Attaches to a 1/2 inch (1.28 CM) variable speed drill.

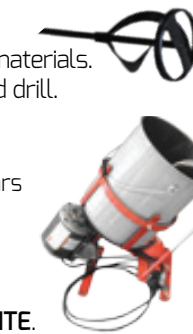
### Portable Pail Mixer

**#TSKM5825** Unit with Prop for Epoxy Mortars

**#TSKR** Standard Epoxy Prop Replacement

**#TSKM1** CON-KORITE™ paddle

Designed for easy mixing of epoxy mortars, **ARMOR-STONE**, **ARMOR-ROCK** and **CON-KORITE**.



## VSC WB CONCRETE SEAL

**VSC CONCRETE SEAL** is an easy to apply water-based, single component acrylic sealer. It has excellent resistance to salts, sulfates and other common chemicals in hog facilities. Seal new concrete or heal weak and stress cracked surfaces. Spray or roll coat apply.

### Typical Coverage:

400 sq. ft. (37 m<sup>2</sup>) per gal. over relatively smooth concrete.

**#ES420-1** 1 gal. (3.8 L) (clear)(4/cs)

**#ES420-5** 5 gal. (19 L) (clear)

## VSC CONCRETE CLEAN & ETCH

**#VP-151-1** 1 gal. (3.8 L) Jug (4/cs)

**#VP-151-5** 5 gal. (19 L) Pail

Does a thorough job of removing waste residue and mineral deposits on concrete substrates. It provides A clean, etched surface for maximum bonding. Safer than muriatic acid and can be used near animals.

### Typical Coverage:

150 sq. ft. (14 m<sup>2</sup>) per gal. mixed 1:2 with water.



## EPO-SET 400 EPOXY GEL PASTE

**EPO-SET 400** is a fast-set polymer paste in a dual cartridge system applied with a "standard" caulking gun. It's mixed and applied in a static mixing tube.

### Typical Coverage:

Coverage is dependent on the hole sizes. One 9 fl. oz. (300 ml) cartridge set will repair approximately 11 linear ft. (3.4 m), 1/4" (.64 cm) x 1/4" (.64 cm) (18.3 cubic inches).

**#72400** Single Unit Cartridge & Tube

**#72400-12** Box of 12 Cartridge & Tube Sets

**#72400-T** Spare Mix Tube



www.vanbergcoatings.com

800-874-0631



www.vanbergcoatings.com

800-874-0631



www.vanbergcoatings.com

800-874-0631





# METAL COATINGS

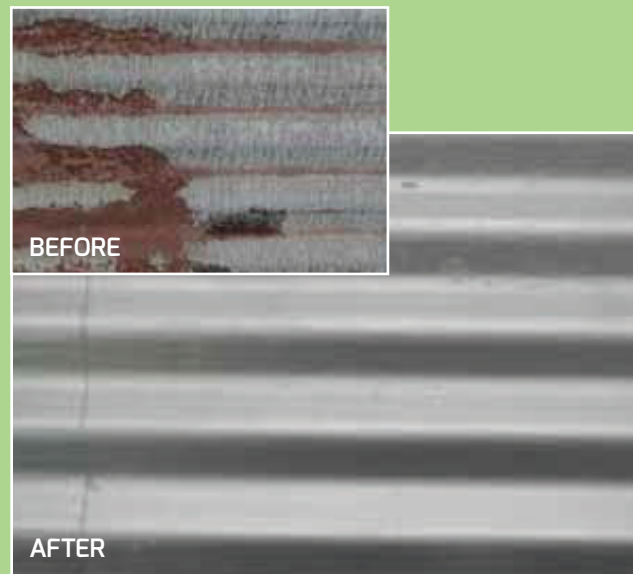
## AMC100L—ALUMINUM MOISTURE CURE URETHANE COATING

*“Ideal for Weathered, Galvanized, or Painted Roofs and Bins to Protect and Extend the Life.”*

A single component, Moisture cure Polyurethane Aluminum Coating with excellent adhesion to sound surfaces. This low viscosity, high “wetting” coating provides excellent corrosion resistance and abrasion resistance. Its resistance to creeping, undercutting, and blistering is superior to epoxy primers.

**Typical Coverage:**  
300-400 sq. ft. (28-37 m<sup>2</sup>) per gal. at 2-3 mils.

#AMC100L-1 1 gal.(3.8 L) Can (4/cs)  
#AMC100L-5 5 gal.(19 L) Pail  
#AMC100L-1K REPAIR KIT:  
1 qt. (.95 L) AMC100L  
1 pt. (.48 L) RUST CONVERTER  
4 Pieces SEAM TAPE



## WMC100—VSC WHITE MOISTURE CURE URETHANE COATING

*“Excellent Stand-Alone Coating or Top Coat for Rusty or Weathered Metal.”*

WMC100 is a single component, chemical resistant moisture cure urethane. This low viscosity, high “wetting” coating provides excellent corrosion resistance and abrasion resistance. Its resistance to creeping, undercutting, and blistering is superior to epoxy primers.

**Typical Coverage:**  
300-400 sq. ft.(28-37 m<sup>2</sup>)/per gal. at 2-3 mils.

#WMC100-1 1 gal.(3.8 L) Can (4/cs)(White)  
#WMC100-5 5 gal.(19 L) Pail (White)  
#WMC100-1K REPAIR KIT-WHITE:  
1 qt. (.95 L) WMC100L  
1 pt. (.48 L) RUST CONVERTER  
4 Pieces SEAM TAPE



# METAL COATINGS

## 3 STEPS TO SUCCESSFUL METAL COATINGS

Successful repair and protection is a result of attention to proper preparation techniques and the use of quality products designed to achieve long-lasting performance.

### STEP 1: CONVERT RUST

Although abrasive blasting and mechanical rust removal are great methods, they are not always feasible. Experience shows that the treatment of rust is best achieved by **VSC RUST CONVERTER**.

### STEP 2: PATCH

Holes, splits, seams and joints are covered with **VSC SEAM TAPE**, designed specifically for all weather conditions and is compatible with VSC coatings.

### STEP 3: CORROSION RESISTANT COATING

Apply selected VSC Coating.

## VSC RUST CONVERTER

VSC RUST CONVERTER stops rust in its tracks preventing further corrosion and rusting on metal surfaces. Stops white rust. When applied it chemically converts rust into a stable black compound. It will oxidize other corrosion and scale. An acrylic layer then forms over the converted rust that can be coated with VSC Coatings. Or, the clear acrylic layer will last as a stand alone repair.

### Typical Uses:

Metal roofs, bins, ceilings and walls on livestock, plant, institutional and farm buildings. It is effective on equipment, boats, tools and virtually any metal structure.

### Typical Coverage:

Variable, typically up to 500 sq. ft. (46 m<sup>2</sup>) per gal..

#RC900-1 1 gal.(3.8 L) 4/cs  
#RC900 1 qt. (.95 L) 12/cs

## VSC SEAM TAPE

This contouring, self-adhesive and high-strength seam tape is great for repairing holes, loose screw heads, splits and seam separations. It will stop leaks as well. It has excellent structural strength, superior adhesion and accepts the solvent based VSC coatings (unlike Butyl seam tapes). Just press the tape onto the surface work into the split, seam or hole.

#RC800-2 2" X 50' (5.1 cm X 12.7 m) Roll



STEP 1: REMOVE LOOSE RUST FIRST



STEP 1: CONVERT RUST



STEP 2: VSC SEAM TAPE



STEP 3: VSC COATING



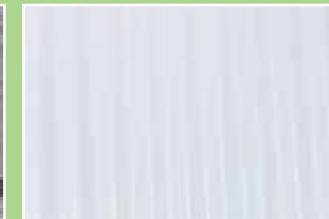
RUSTY ROOF



APPLY CONVERTER



CONVERSION COMPLETED



COATING APPLIED



SEAM TAPE



REPAIR

# CONCRETE & METAL COATINGS

REPAIRS, PROTECTS & EXTENDS THE LIFE OF  
CONCRETE & METAL FOR PORK PRODUCTION

REPAIR

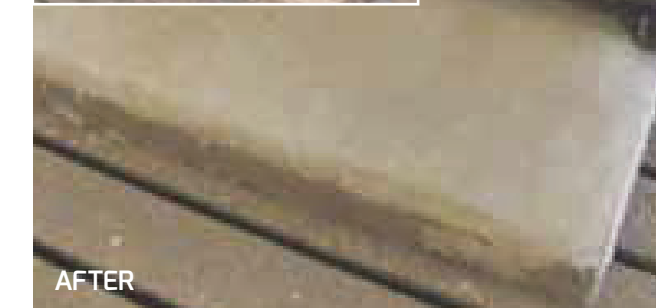
PROTECT

RESTORE

## CONCRETE



BEFORE



AFTER



BEFORE

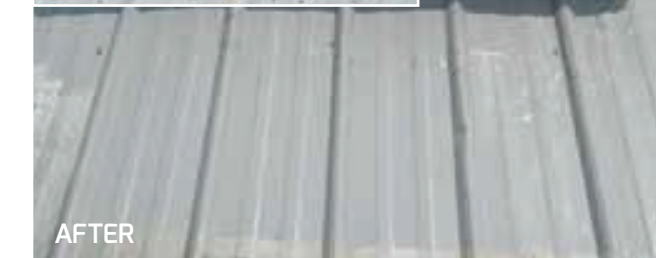


AFTER

## METAL



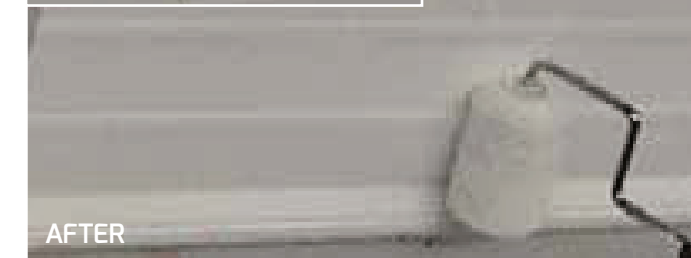
BEFORE



AFTER



BEFORE



AFTER

*Don't wait until replacement is needed—extend the life of concrete & metal!  
Save time and money by repairing and protecting now!*

www.vanbergcoatings.com

800-874-0631



**VANBERG**  
SPECIALIZED COATINGS



**VANBERG**  
SPECIALIZED COATINGS

10705 Cottonwood Lenexa, KS 66215 • 913-599-5939 • FAX: 913-599-5949 • 800-874-0631  
Email: vsc@vanbergcoatings.com • www.vanbergcoatings.com

www.vanbergcoatings.com

800-874-0631



**VANBERG**  
SPECIALIZED COATINGS