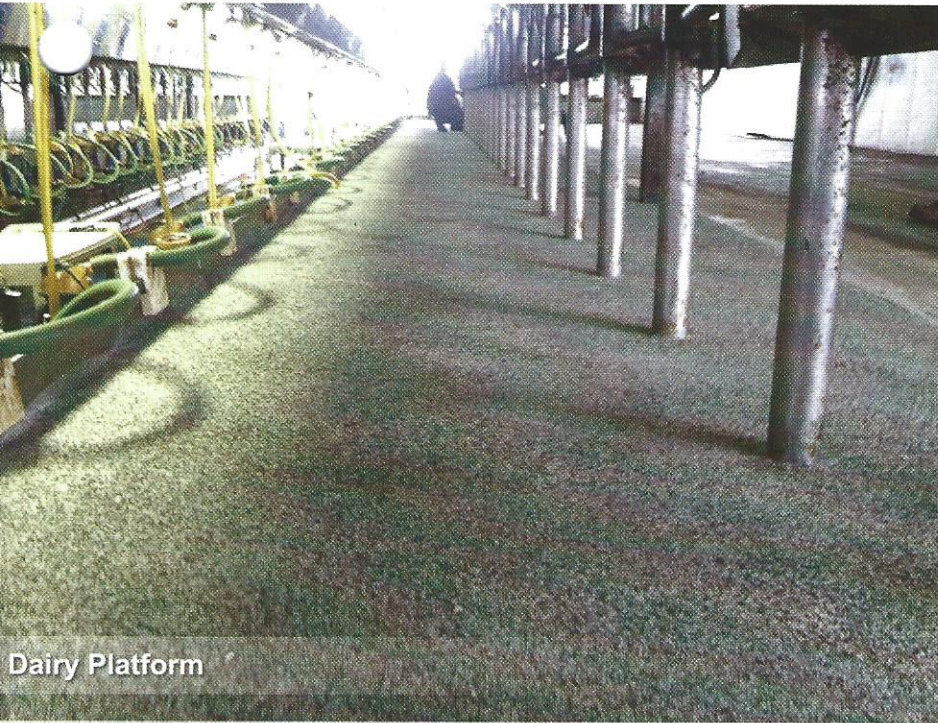




ARMORCOAT XC SYSTEMS

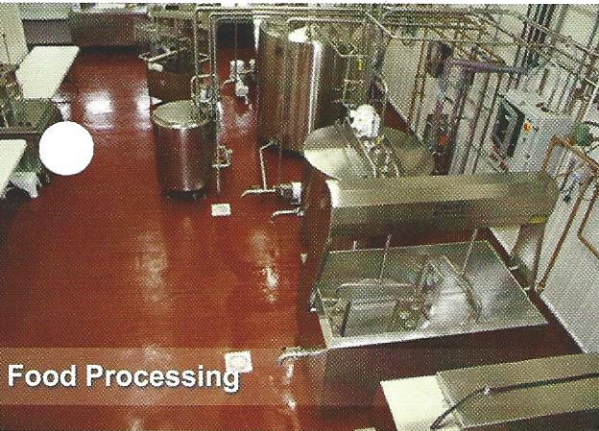
XPRESS CURE HIGH WEAR & CHEMICAL RESISTANT OVERLAY



Dairy Platform

ARMORCOAT XC offers maximum durability, UV and chemical resistance, and speed clocking in around 40 minutes set time at 70°F. An added 'cold-cure' accelerator may also be used in below freezing temperatures for fast overlays in refrigerated areas or during inclement weather.

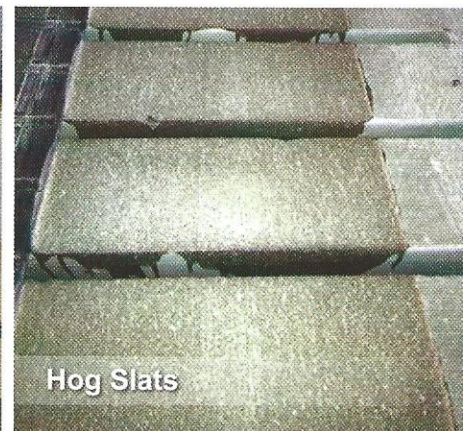
This VOC compliant technology offers a flowable stand-alone coating with good leveling properties and can also be used to create a number of systems (see reverse) to facilitate the needs of any fast-paced production environment.



Food Processing



Containment



Hog Slats

Applications

Agricultural

Parlor Decks
Tank Rooms
Feeding Surfaces
Chemical Storage
Feed & Grain Storage
Hog Slats
Feed Troughs
Floors

Food Processing & General

Milk & Cheese
Meat Packing
Slaughter Facilities
Beverage Production
Manufacturing
Containment
Offices & Break rooms
Restrooms & Locker Rooms

Provides

- **Xpress Cure** - Quick return to service in 30-60 minutes
- **Cold Weather Cure** - Apply down to -20°F (-29°C)
- **Superior Wear Protection** - Up to 20 years protection or more
- **Chemical Resistant** - Withstands corrosive production compounds



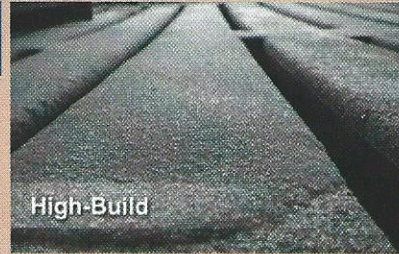


ARMORCOAT XC SYSTEMS

VSC Systems Available with Xpress Cure Technology

ARMOR-ROCK XC

- **Armor-Rock High-Build** - The most heavy-duty version of Armor-Rock is designed for tough wear in harsh environments. Hardened aggregates are blended and broadcast into the system to develop excellent resistance to chemicals and the impact of animal and machinery traffic. Use to resurface new to minimal wear, or areas repaired prior to application.
- **Armor-Rock THX Smooth** - A lower build version of Armor-Rock XC, the THX Smooth system utilizes a thickening silica to provide uniform surfaces in environments where sanitary, durable stability are required. Optimal for feeding surfaces, pharmaceutical floors, and clean room areas.
- **Armor-Rock THX Non-Slip** - Incorporating THX technology and durability with the added benefit of a broadcast, non-slip surface where required for safety and added life expectancy of the coating. Perfect for areas with high foot traffic.



High-Build



Non-Slip



Smooth

ARMOR-STONE XC

- **Armor-Stone Overlay** - This trowel applied system integrates a specially processed aggregate combined with the Armorcoat XC formula to create a mortar overlay that can repair and level in one application. At a 1/4" and up, this system adds durability and chemical resistance to any surface. Excellent for containment and areas where drainage requires proper sloping.



Armor-Stone Overlay

COLOR-STONE XC

- **Color-Stone Decorative** - For durability and beauty the decorative Color-Stone system utilizes hardened aggregate which may be selected in a wide variety of colors to create an assortment of attractive, solid or blended flooring systems. This system is excellent for manufacturing, showrooms, restrooms, breakrooms and anywhere a presentation of image is desired and a quick return to service is vital.



Color-Stone Decorative

COLOR-FLAKE XC

- **Color-Flake Decorative** - With the properties of Color-Stone this system provides a distinguished look from all other systems. Colored vinyl flakes are broadcast into the system during application in a random pattern, or for full coverage and then top-coated to create a unique and durable flooring system. Available in standard or custom blends. Use wherever an attractive and easy to maintain floor is required.



Color-Flake Decorative