

ARMOR-ROCK™ 3800 FLOORING

ADVANCED POLYMER CHEMISTRY PRODUCES A SYSTEM WITH EXCEPTIONAL RESISTANCE TO WEAR AND HARSH CHEMICALS.

REPAIR

PROTECT

RESTORE

AGRICULTURAL— DAIRY FLOORS & SLATS IN PIG BARN



INDUSTRIAL— PLANT & CHEMICAL ROOM FLOORS



ARMOR-ROCK™ is a Non-Slip, Seamless & Sanitary Surface

- Withstands Heavy Traffic
- Stands Up to Harsh Chemicals
- Easy to Keep Clean
- Forms Permanent Bond

**PROTECT NEW
RESTORE OLD**

OFFICES, BREEZEWAYS, LABS, KITCHENS, BREAK ROOMS & HALLWAYS TOO!

www.vanbergcoatings.com

800-874-0631

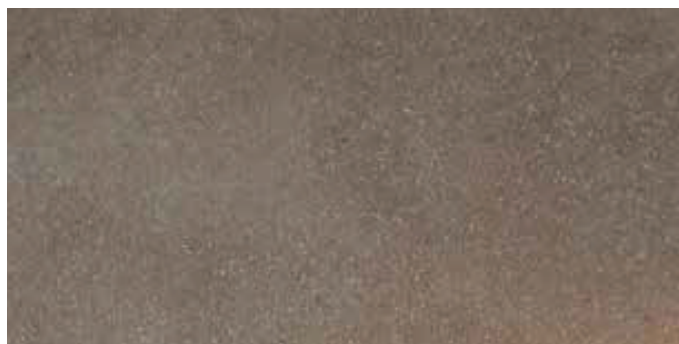


VANBERG
SPECIALIZED COATINGS



ARMOR-ROCK™ 3800 SURFACE OPTIONS

VSC MEDIUM



Standard non-slip medium blend.
Available in Natural or G-Diamond.

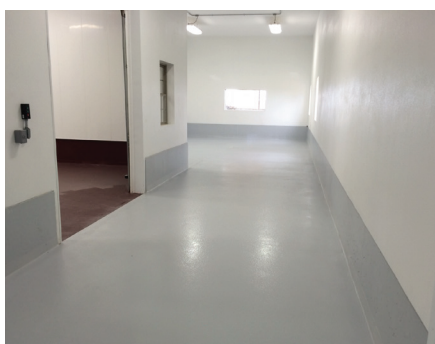
G-DIAMOND



Extra coarse blend with exceptional
wearing properties.

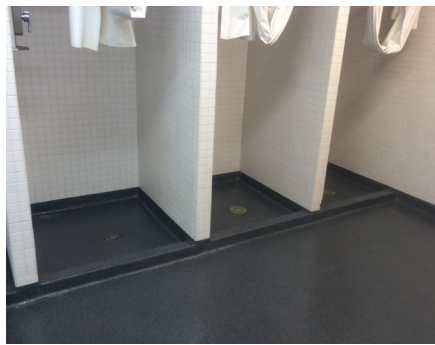
TANK ROOM, CHEMICAL ROOM, OFFICES & HEAVY TRAFFIC FLOORS

VSC MEDIUM NON-SLIP FLOORING



VSC MEDIUM G-DIAMOND is our most popular aggregate blend. It is used with the Natural ARMORCOAT 3800 (Clear) EPOXY or with many color options using VSC Color Additives.

COLOR-STONE



VSC COLOR-STONE blends offer a wide variety of tweed blends for attractive and tough wearing overlays.
Available in MEDIUM or COARSE. Use VSC POLY ASPARTIC for Clear, color-stable top coats.

www.vanbergcoatings.com
800-874-0631



APPLICATION PROCESS See Application Guide for specific details.

STEP 1

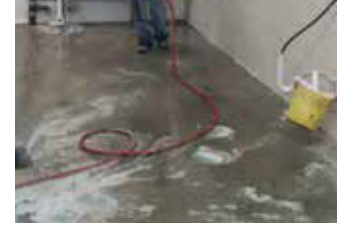
- Level eroded zones using **CON-KORITE™** or other **VSC EPOXY MORTARS**
- Prepare substrate mechanically or chemically using **VSC CONCRETE CLEAN & ETCH**



Level Eroded Zones with **CON-KORITE™ MORTAR**



Mechanical Prep



VSC CONCRETE CLEAN & ETCH

STEP 2

- Combine **AR ADMIX** with 1.362 gal. unit of **ARMORCOAT 3800 EPOXY**



ARMOR-ROCK 3800 Batch



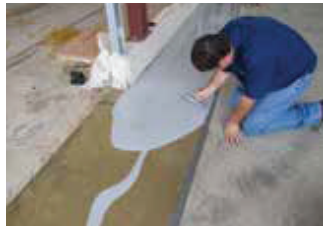
Combine (See mix guide.)



Mix Thoroughly

STEP 3

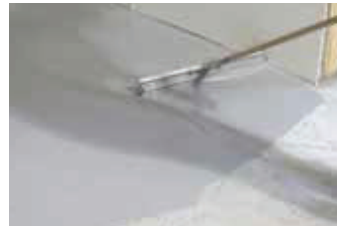
- Using either a notched trowel, notched squeegee or gauge rake to achieve desired thickness, spread slurry over the surface



Notched Trowel



Notched Squeegee



Gauge Rake

ARMOR-ROCK Coverage: 3/16" (4.8 mm) covers 26 sq.ft./batch; 1/4" (6.4 mm) covers 19 sq.ft./batch. (2.4-1.4 m² per batch.)

STEP 4

- Roll to level with looped cover or spiked roller
- Broadcast selected aggregate to rejection (no shiny spots)—maintaining a wet edge between batches



Roll



Broadcast



Wet Edge

STEP 5

(Optional Seal Coat)

- Remove excess aggregate and mix and apply **VSC POLY ASPARTIC TOP COAT** with squeegee and roller



Mix Epoxy



Squeegee



Roll

Typical Top Coat Coverage: 80 (coarse surfaces) to 100 (medium surfaces) sq. ft. per gallon. (2-2.4 m²/L)

www.vanbergcoatings.com

800-874-0631



VANBERG
SPECIALIZED COATINGS

ARMOR-ROCK 3800 SYSTEM

INDIVIDUAL COMPONENTS

(System consists of A, B, and C):

- A. ARMORCOAT 3800** 1.362 gal (5.16 L) Kit #AC3800
- B. AR ADMIX** 25 lb. Bag (11.25 kg) #520B-25+
- C. VSC MEDIUM G-DIAMOND** 25 lb. Bag (11.25 kg) #82900M-25
OR
VSC COARSE G-DIAMOND 35 lb. Bag (15.9 kg) #82900-35N



COMPLETE ARMOR-ROCK KIT:

AC 3800 KIT IN A BOX/AGGREGATES* IN A PAIL

69 lbs. (31 kg) #AC3800-AR

*Includes AR ADMIX and VSC MEDIUM G-DIAMOND

COVERAGE PER KIT OR BATCH:

26 sq. ft. (2.4 m²) @ 3/16 inch (4.8 mm)



SUPPLIES

CONCRETE CLEAN & ETCH

Item#	Description
VP-151-1	1 gal (3.8L) (4/CS)
VP-151-5	5 gal (19L)



Portable Pail Mixer

Item#	Description
TSKM5825	Unit with Prop for Epoxy mortars
TSKR	Standard Prop Replacement
TSKM1	CON-KORITE™ Paddle



9" Roller Frame

Item#	Description
TSF0010-9	9-inch (23 cm) HD frame



SOLVENT 101 for Clean Up

Item#	Description
VPC-101-1	1 gal (3.8L)
VPC-101-5	Solvent 101 (4/CS) 5 gal (19L)



Notched Squeegee

Item#	Description
TS1418-SE	1/4" (6.4 mm) Notch
TSF0008	5' (1.5 m) Tapered Pole



9" Covers

Item#	Description
TSR204-9	Coatings Cover 1/2" (12.8 mm) Nap
TSR233-9	Looped Cover for ARMOR-ROCK Base Mix



4" Prop Mixer for Epoxy Resins

Item#	Description
TS46565	4-inch (10.2 cm) prop mixer



Slat Squeegee

Item#	Description
TSFECSE-6H	1/4" (6.4 mm) Slat Squeegee with Handle



3' Pole Set

Item#	Description
TSF0007-3	3-Piece Pole Set (frame not included)



Color Additives (Others available)



1 qt. (.95L) units; Use 1 pint (.47L) per 1.5 gal (5.7L)

For Project Planning Assistance, Application Guidelines & Tech Support, Contact Your VSC Rep

www.vanbergcoatings.com

800-874-0631



VANBERG
SPECIALIZED COATINGS