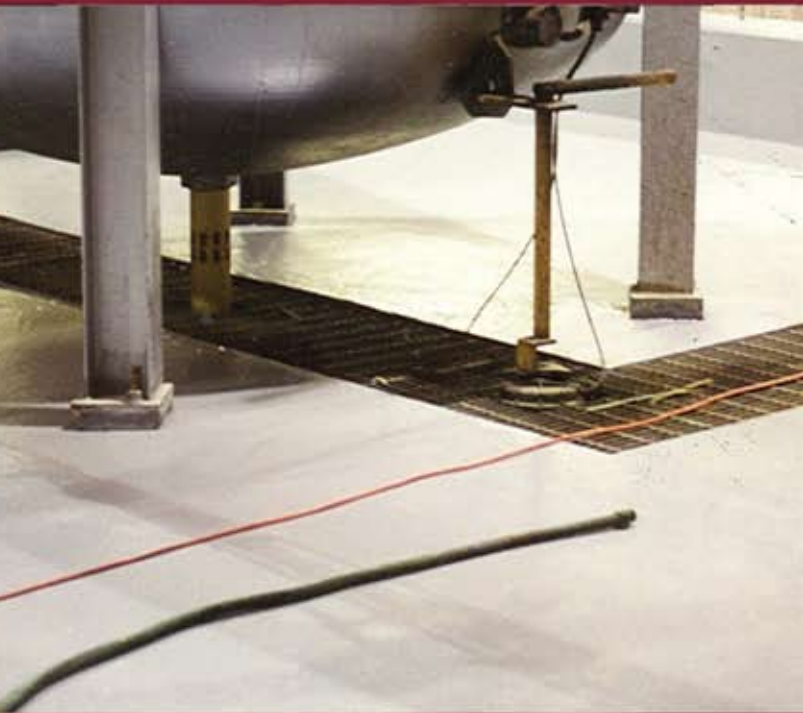




VANBERG SPECIALIZED COATINGS

CONCRETE REPAIR & PROTECTION PRODUCTS

EPO-CRETE URETHANE MORTAR FLOOR SYSTEM



EPO-CRETE is a urethane mortar overlay system. It is formulated with an expansion coefficient similar to concrete so that it can withstand significant thermal-shock conditions. EPO-CRETE also has very good chemical and wear resistant properties and contains zero VOCs.

EPO-CRETE is available in the trowel-applied TR mortar and the self-leveling SL versions to fit virtually any application. Choose from Gray, Tile Red and Tan colors. Accepts VSC ANTI-MICROBIAL ADDITIVE for resistance to a wide range of microbes. USDA accepted.

Uses

Industrial

- Food Processing Plants
- Industrial Kitchens
- Beverage Plants

Agricultural

- Milk & Cheese Plants
- Veterinary
- Livestock Facilities

EPO-CRETE SL

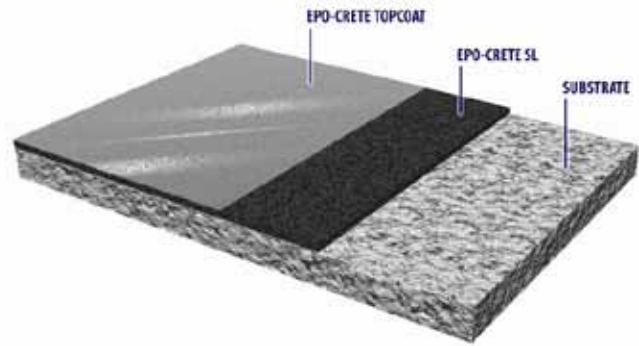
EPO-CRETE SL is a self-leveling urethane mortar system applied as a smooth slurry or slurry-broadcast. It can be applied from 1/8 inch thickness or greater with or without a VSC broadcast aggregate. A final topcoat is optional.

Typical Coverage: 74-76 sq. ft. per unit at 1/8 inch nominal thickness and 50 sq. ft. at 3/16 inch

Note: Aggregate must be added for all components to cure.

One unit consists of (1) 1.85 Gal. kit of EPO-CRETE Liquids and (1) 51.4 Lb. bag of EPO-CRETE SL Aggregate.

| | | |
|----------------------|------------------------|--------------------------------|
| Product | EPO-CRETE LIQUIDS | |
| Availability: | #82400 | 1.85 Gal. Kit (1:1 Mix) |
| | EPO-CRETE SL AGGREGATE | |
| | #825007G | 51.4 Lb. Bag (Gray) |
| | #825007R | 51.4 Lb. Bag (Tile Red) |
| | #825007T | 51.4 Lb. Bag (Tan) |
| | VSC MEDIUM AGGREGATE | |
| | #210-520B | 50 Lb. Bag |



Application:

- Step 1:** Mix liquid components followed by aggregate.
- Step 2:** Spread with screed rake or notched trowel over a properly prepared and dried substrate.
- Step 3:** Roll with a spiked roller or looped roller to level.
- Step 4:** Broadcast VSC MEDIUM Aggregate to uniform saturation. About .5 Lb. per sq. ft.
- Step 5:** Apply topcoat if desired.

EPO-CRETE TR

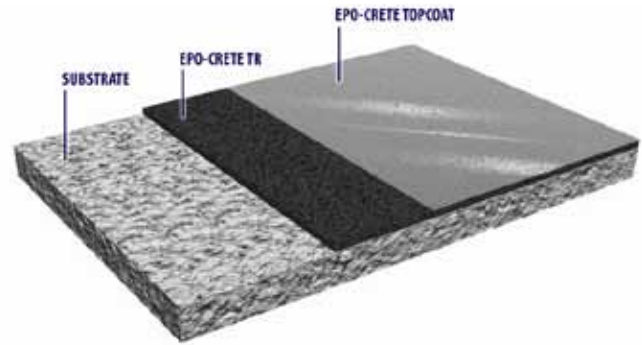
EPO-CRETE TR is a trowel-applied urethane mortar system. Typically applied at 1/4 inch. It can be used to cove and slope. Topcoats are optional.

Typical Coverage: 50-57 sq. ft. per unit at 1/4 inch nominal thickness

Note: Aggregate must be added for all components to cure.

One unit consists of (1) 1.85 Gal. kit of EPO-CRETE Liquids and (2) 45 Lb. bags of EPO-CRETE TR Aggregate.

| | | |
|----------------------|------------------------|-----------------------------------|
| Product | EPO-CRETE LIQUIDS | |
| Availability: | #82400 | 1.85 Gal. Kit (1:1 Mix) |
| | EPO-CRETE TR AGGREGATE | |
| | #826007G | (2) 45 Lb. Bags (Gray) |
| | #826007R | (2) 45 Lb. Bags (Tile Red) |
| | #826007T | (2) 45 Lb. Bags (Tan) |



Application:

- Step 1:** Mix liquid components followed by aggregate.
- Step 2:** Place by screed followed by steel trowel finishing.
- Step 3:** Apply topcoat if desired following cure.

EPO-CRETE TOPCOAT

Typical Coverage: 150-175 sq. ft. per mix

| | | |
|----------------------|-----------------------------|--------------------------------|
| Product | EPO-CRETE LIQUIDS | |
| Availability: | #82400 | 1.85 Gal. Kit (1:1 Mix) |
| | EPO-CRETE TOPCOAT AGGREGATE | |
| | #827007G | 16 Lb. Bag (Gray) |
| | #827007R | 16 Lb. Bag (Tile Red) |
| | #827007T | 16 Lb. Bag (Tan) |

MICROBE-X

When combined with MICROBE-X anti-microbial additive, EPO-CRETE provides protection from a wide range of fungi and bacteria.

Product
Availability: Special order with MICROBE-X Additive



VANBERG SPECIALIZED COATINGS
CONCRETE REPAIR & PROTECTION PRODUCTS

P.O. Box 19414, Lenexa, KS 66285-9414 (913) 599-5939 FAX: (913) 599-5949
Toll Free: 1-800-874-0631 E-mail: vsc@vanbergcoatings.com Web: www.vanbergcoatings.com