



VANBERG SPECIALIZED COATINGS

CONCRETE REPAIR & PROTECTION PRODUCTS

"Products and Systems for Dairy Production Since 1989"



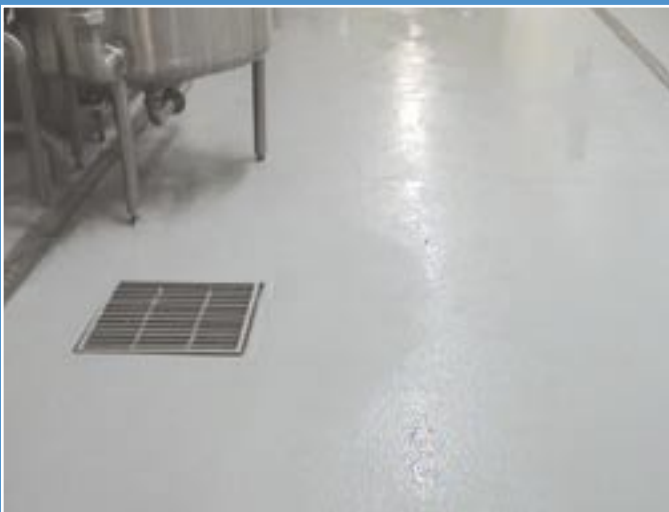
ARMOR-ROCK THX Mangers



ARMOR-SLATE Bunk



ARMOR-SLATE Harvestore Floor



ARMORCOAT FAST Milk Room

ARMOR-ROCK THX & ARMOR-SLATE SYSTEMS

ARMOR-ROCK THX combines ARMORCOAT FAST EPOXY with THIXO fine aggregate to produce a smooth uniform tile-like overlay. This system has exceptional wear performance and chemical resistance. Seamless and sanitary.

This self-leveling system is ideal for feeding surfaces (Mangers). Applied at 1/16 to 1/8 inch it will restore and level pitted and uneven substrates. Designed to last indefinitely.

ARMOR-ROCK THX Base Mix:

1.5 gallon ARMORCOAT FAST EPOXY plus 25 lbs. THIXO AGGREGATE

Typical Coverage: 80-100 sq. ft. per 1.5 gal. mix

ARMOR-SLATE uses coarser VSC aggregates and is applied from 3/16 to 1/4 inch (Bunks, Harvestore floors).

ARMOR-SLATE Base Mix:

1.5 gal. ARMORCOAT FAST EPOXY plus 25 lbs. ARMOR-ROCK ADMIX

Typical Coverage: 20-30 sq. ft. per 1.5 gal. mix (Harvestores and Bunks)

ARMORCOAT FAST EPOXY

This high-build coating is the next best option to ARMOR-ROCK THX and ARMOR-SLATE. Applied at 80-100 sq. ft. per gallon.

Product Availability:

- #AC210-380 1.5 Gal. ARMORCOAT FAST* (clear)
- #AC210-183VB 1.5 Gal. ARMORCOAT FAST (med. gray)
- #AC210-380-3 3 Gal. ARMORCOAT FAST* (clear)
- #AC210-183VB-3 3 Gal. ARMORCOAT FAST (med. gray)
- #AC210-380-15 15 Gal. ARMORCOAT FAST* (clear)
- #AC210-183VB-15 15 Gal. ARMORCOAT FAST (med. gray)

*See color additive options (page 2) See aggregates (page 2)

For the most uniform VSC coating or VSC overlay apply over a prime coat of EPO-SEAL WB FAST (1 hr. cure) at 300 sq. ft. per gallon or the heavier bodied EPO-POXY (5 hr. cure) at 250 sq. ft. per gallon.

- #ES2300 .75 Gal. EPO-SEAL WB FAST EPOXY (clear)
- #ES2300-3 3 Gal. EPO-SEAL WB FAST EPOXY (clear)
- #ES016-3 3 Gal. EPO-POXY HS (clear)
- #ES016-15 15 Gal. EPO-POXY HS (clear)

ARMOR-ROCK FLOORING SYSTEM

The ARMOR-ROCK OVERLAY SYSTEM combines the strength and chemical resistance of the ARMORCOAT FAST EPOXY with the superior wearability of VSC AGGREGATES. Restore and protect any patched and leveled concrete substrate.

Produces a uniform non-slip surface for sound footing for people and cattle. Sanitary and yet easy to keep clean. Wastes just wash off.

Available in the VSC MEDIUM, VSC ES NATURAL or the super-hard VSC G-DIAMOND. Many colors to choose from as well.

Base Mix:

1.5 gallon ARMORCOAT FAST EPOXY
plus 25 lbs. ARMOR-ROCK ADMIX
plus 25 lbs. AGGREGATE BROADCAST

Typical Coverages:

- 21 sq. ft. per 1.5 gallon at 1/4 inch
- 28 sq. ft. per 1.5 gallon at 3/16 inch
- 42 sq. ft. per 1.5 gallon at 1/8 inch

Parlor floors are often installed without topcoats for maximum non-slip surfaces. ARMOR-ROCK SYSTEMS installed in milk, tank and chemical rooms have a final topcoat applied for cleaning ease at the rate of 120 to 150 sq. ft. per 1.5 gallon ARMORCOAT FAST EPOXY.

VSC AGGREGATES

ADMIX Only:

#520B-25 25 Lb. ARMOR-ROCK ADMIX
#TS19110 10 Lb. THIXO Additive
#TS19150 50 Lb. THIXO Additive

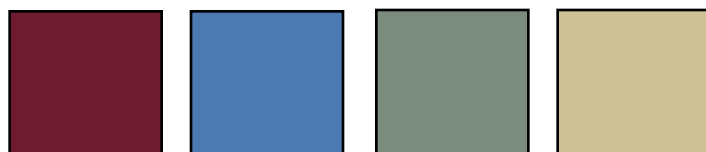
ADMIX & Surface Broadcast:

#210-520B 50 Lb. VSC Medium (Milk & Chemical Rooms)
#82801-50N 50 Lb. ES Natural Coarse (Parlors)
#82900-35N 35 Lb. G-Diamond Most Coarse (Parlors)

COLOR ADDITIVES

Add to pigment clear ARMORCOAT FAST EPOXY. Choose from Tile Red, Blue, Green or Beige. (contact VSC for other color options)

Available in 1 Qt. units (4/cs). Use 1 pint per 1.5 gallon unit and 2 pints per 3 gallon unit.



Tile Red

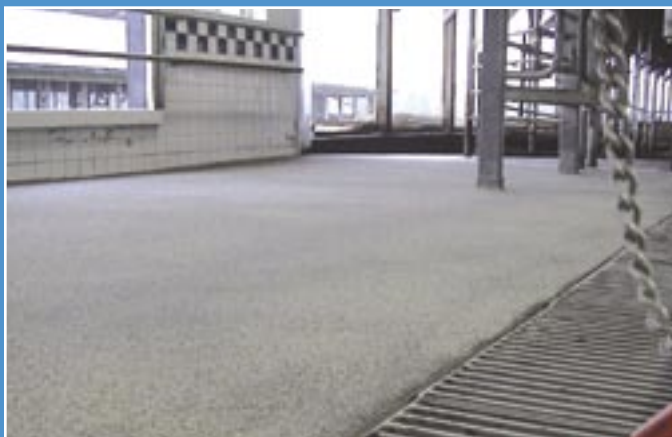
Blue

Green

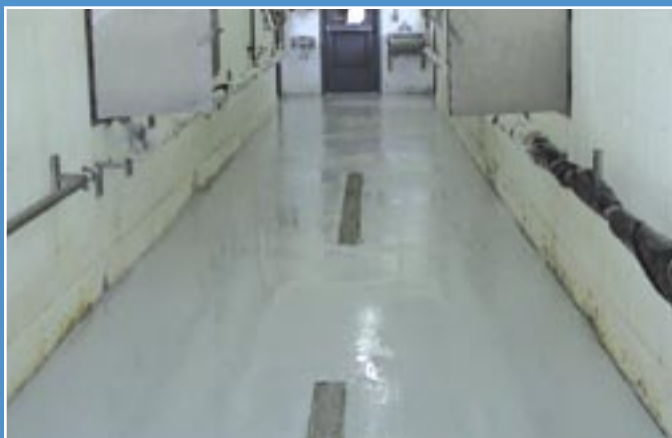
Beige



ARMOR-ROCK ES NATURAL Parlor



ARMOR-ROCK G-DIAMOND Parlor



ARMOR-ROCK with ARMORCOAT FAST EPOXY Tank Room

Thorough mixing and professional application methods are provided.

CON-KORITE XTRA FAST-SET HIGH-STRENGTH REPAIR MORTAR

CON-KORITE develops 3,000 psi compressive strength in one hour and nearly 10,000 psi in 28 days. This unique formula has exceptional abrasion, salts and sulfates resistance making it the longest lasting and most cost-effective option for severely worn (any thickness greater than 1/4 inch) surfaces. Being a concentrate, CON-KORITE can be extended (CON-KORITE X'TEND) with coarse sand or pea gravel up to 1:1 to grout deep holes and with mortar sand at the rate of 2 parts mortar to 1 part mortar sand to make repairs in medium duty areas such as gutters and bunks.

Use KB25 ACRYLIC RESIN with the CON-KORITE XTRA mortar to enhance bond properties and resistance to absorption.

Typical Coverage at 1/4 inch (55 lb. bag):

25 sq. ft. unextended

37.5 sq. ft. mixed 2:1 with sand (CON-KORITE X'TEND)

50 sq. ft. mixed 1:1 with sand (grouting over 1 inch).

CON-KORITE KITS

#KB0100 60 Lb. Kit

(Pail contains 55 lb. bag Mortar, 2-qts. KB25, 1-SET CONTROL) *This convenient kit is the best way to get started!*

#KB0066 17 Lb. Grout Mix - fills holes, re-set posts

COMPONENTS *(Order separately for larger jobs)*

#KB0060 55 Lb. Bag CON-KORITE

#KB0061 55 Lb. Pail CON-KORITE

#KB0026 1 Gal. Jug KB25 (4/cs)

#KB0027 5 Gal. Pail KB25

#KB0001 Set Control Pouch (Slows set time in warm weather)

Typical KB25 Use:

- 1-gallon KB25 per three 55 lb. bags at 1:2 mix with water
- 1-gallon KB25 per two 55 lb. bags at 1:1 mix with water
- 1-gallon KB25 per 55 lb. bags using straight resin

Typical Set Control Use:

- 1-pouch per 55 lbs.

EPO-STONE FAST EPOXY MORTAR

This is a super high-strength chemical resistant epoxy repair mortar. Available in Fast, sets in 4 to 5 hours and XTRA Fast sets in 1 to 2 hours. Natural Color. Use to make quick high-strength repairs or cover entire floors.

Product Availability:

#82810-N 5 Gal. Pail Kit EPO-STONE EPOXY MORTAR

Typical Coverage: 18 sq. ft. @ 1/4 inch

#82128-2 2 Gal. Kit EPO-STONE XTRA FAST MORTAR

Typical Coverage: 6 sq. ft. @ 1/4 inch



After



Before

Common Uses:

- Parlor Floors
- Feed surfaces
- Troughs
- Re-set penning
- Floor overlays
- Walls



60 Lb. Kit



17 Lb. Grout Mix

CON-KORITE



55 Lb. Bag



55 Lb. Pail

KB25 ACRYLIC RESIN

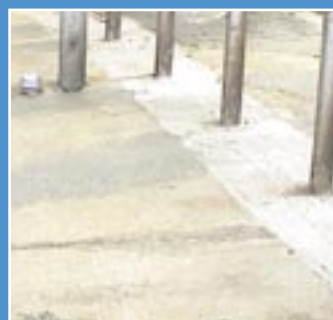


1 Gal. Jug, 5 Gal. Pail

SET CONTROL



Pouch



FAST EPO-STONE
EPOXY MORTAR Repair



FAST EPO-STONE
EPOXY MORTAR Floor



ARMOR-GLAZE



V-THANE WALL COAT



Prop Mixer



Pail Mixer



VSC Concrete Clean & Etch
1 Gal. Jug



VSC Concrete Clean & Etch
5 Gal. Pail

ARMOR-GLAZE WALL COATING SYSTEMS WITH MICROBE-X 'ANTI-MICROBIAL' ADDITIVE

ARMOR-GLAZE is a seamless joint-free epoxy coating system designed for tough environments. This sanitary heavy build coating provides superior chemical and abrasion resistance and is easy to keep clean. Combine with MICROBE-X anti-microbial additive for protection from a wide range of fungi and bacteria. ARMOR-GLAZE is U.S.D.A. approved for incidental food contact use. FAST is a 6 hour set.

Typical Coverage: 80-100 sq. ft. per gallon.

Product Availability: (*White and other color options.*)

- #AC400 1.5 Gal. Kit ARMOR-GLAZE
- #AC400-3 3 Gal. Kit ARMOR-GLAZE
- #AC400B 1.5 Gal. Kit ARMOR-GLAZE FAST
- #AC400B-3 3 Gal. Kit ARMOR-GLAZE FAST
- #AC499AM 1 Pint MICROBE X

V-THANE WALL COAT is a urethane coating with excellent wear and chemical resistance, color stability, and UV light resistance. Apply as a topcoat over ARMOR-GLAZE at 300 sq. ft. per gallon (two coats as stand alone coating).

Product Availability: (*White and other color options.*)

- #UG320V 1.5 Gal. V-THANE WALL COAT
- #UG320V-3 3 Gal. V-THANE WALL COAT

SUPPLIES

PROP MIXER For thorough mixing of high performance materials. Attaches to a 1/2 inch variable speed drill.

- #TS46565 Prop Mixer

PAIL MIXER Designed for easy mixing of epoxy mortars (ARMOR-ROCK, EPO-STONE & CON-KORITE).

- #TSKM5825 Pail Mixer
- #TSKMR1 CON-KORITE Paddle

VSC CONCRETE CLEAN & ETCH Does a thorough job of removing waste residue and mineral deposits on concrete substrates. It provides a clean, etched surface for maximum bonding.

Typical Coverage: 150-200 sq. ft./gal. mixed 1:2 with water.

Product Availability:

- #VP-151-1 1 Gal. Jug Clean & Etch (4/cs)
- #VP-151-5 5 Gal. Pail Clean & Etch



VANBERG SPECIALIZED COATINGS

CONCRETE REPAIR & PROTECTION PRODUCTS

"Products and Systems for Dairy Production Since 1989"

P.O. Box 19414, Lenexa, KS 66285-9414 (913) 599-5939 FAX: (913) 599-5949
Toll Free: 1-800-874-0631 E-mail: vsc@vanbergcoatings.com Web: www.vanbergcoatings.com