



# VANBERG SPECIALIZED COATINGS

CONCRETE REPAIR & PROTECTION PRODUCTS

*"Products and Systems for the Coatings Industry Since 1989"*

## CON-KORITE X'TRA

**HIGH STRENGTH ABRASION-RESISTANT  
FAST SET REPAIR MORTAR**

**CON-KORITE X'TRA** is a pure cement fast-setting, extra abrasion resistant, high-strength and non-shrink mortar. It can be used as an interior/exterior patching material or to level concrete surfaces. It can also be used for floor overlays and grouting. When mixed with water, it produces a uniform, trowel-able mortar. When mixed with KB25 ACRYLIC RESIN, it produces a repair with very good resistance absorption by corrosive compounds.

### FEATURES:

- **Fast Setting** - Ready for use within 30 min. to 1 hour at 70° F
- **Water, Salt & Sulfate Tolerant** - Withstands tough conditions
- **Exceptional Abrasion Resistance** - Stands up to heavy traffic
- **Interior/Exterior Use** – Tolerates all weather conditions
- **Non-Shrink** - Minimizes risk of delamination, improves bond
- **High Strength** – 3 to 5 times stronger than other products
- **Vertical/Horizontal Use** - Use for floors and walls, no forms

**For over 20 years Vanberg Specialized Coatings**

has built its reputation on high performance  
dependable concrete repair products.

**"WHEN CONCRETE GETS UGLY, CONKORITE X'TRA WILL  
SAVE YOUR CONCRETE'S LIFE!"**

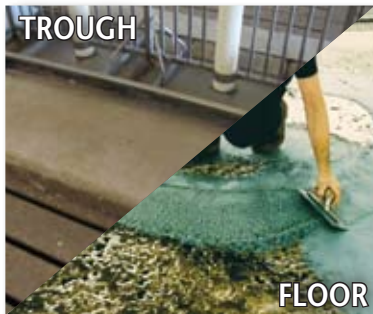


## APPLICATIONS:

Patch or overlay eroded concrete surfaces. Rebuild broken concrete curbs, beams, and slats. Use as a precision grouting under columns, machine base plates, anchor bolts, and gating. Smooth porous walls. Ideal for all applications where quick, high strength is required.

### AGRICULTURAL

- Feed Bunks/ Mangers
- Concrete Slats
- Floors/Walls
- Gutters/Troughs
- Walkways/Curbs
- Parlor Floors



### INDUSTRIAL/COMMERCIAL

- Plant Floors
- Wastewater Treatment
- Roadways & Runways
- Walkways
- Concrete Tanks
- Columns/Walls



TYPICAL COVERAGE: 25 sq.ft. @ 1/4" per 55 lbs.

#### TYPICAL TEST DATA @ 70° F AND 50% R.H.

Compressive Strength, psi (ASTM C 109)

1 hour	3,000
3 hours	4,500
7 days	6,000
28 days	9,000+
Yield, Cu. Ft. (55 lb. bag) :	0.50
Time of Set ASTM C 191 :	15 min.

**Simple to use too...** just add water and mix.

Use **KB25 ACRYLIC RESIN** as an admixture for **Additional Resistance to liquids absorption** into the cured mortar and for added **Bonding Strength**. Replace 25% up to 100% of the water with KB25 RESIN. **Typical use:** 1 gal KB25 for every 3 bags mortar.

#### KB 25 ACRYLIC RESIN USE (TYPICAL):

**As a bonding agent or primer:** 200 to 300 sq. ft. per gallon (1 part KB25 to 2 parts water)

**As an admixture with CON-KORITE:** For general use, mix 1 part KB25 to 2-3 parts water. For 1/2 in. overlays, mix 1 part KB25 to 1 part water. For edging areas and thin overlays, use straight KB25.

In general, substitute 1/3 to 1/2 of the water requirement with KB25.

#### SET CONTROL:

In warm weather, or to extend working time, use SET CONTROL (#KB0001 - one pouch) at the rate of **one pouch per 55 lbs. mortar**. The working time will be extended approximately 20 minutes.

### CON-KORITE PACKAGING



**KIT**

#KB0100

60 lb. pail (24/pallet)  
\*Includes 2 qt. KB25 & (1) SET CONTROL



#KB0061

55 lb. pail  
(36/pallet)



#KB0066

17 lb. pail  
Con-Korite Grout  
(for deep holes)



#KB0060

55 lb. bag  
(56/pallet)

### KB25 ACRYLIC RESIN



#KB0026

KB25 ACRYLIC  
RESIN-1 gal jug  
(4/case)



#KB0027

KB25 Acrylic  
Resin-5 gal pail

### SET CONTROL

#KB0001

1 Pouch Set Control  
(50/box)



## VANBERG SPECIALIZED COATINGS

CONCRETE REPAIR & PROTECTION PRODUCTS

"Products and Systems for the Coatings Industry Since 1989"

P.O. Box 19414, Lenexa, KS 66285-9414 (913) 599-5939 FAX: (913) 599-5949  
Toll Free: 1-800-874-0631 E-mail: [vsc@vanbergcoatings.com](mailto:vsc@vanbergcoatings.com) Web: [www.vanbergcoatings.com](http://www.vanbergcoatings.com)