



VANBERG SPECIALIZED COATINGS

CONCRETE REPAIR & PROTECTION PRODUCTS

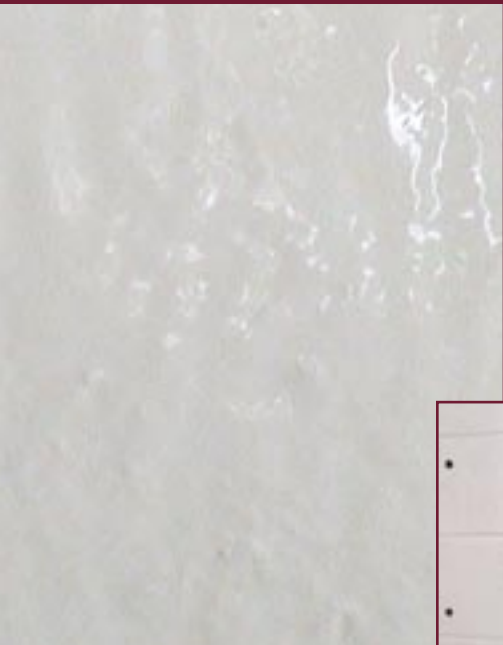
"Products and Systems for the Coatings Industry Since 1989"

ARMOR-GLAZE WALL COATING SYSTEMS WITH MICROBE-X 'ANTI-MICROBIAL' ADDITIVE

ARMOR-GLAZE is a seamless and joint-free epoxy coating system designed for tough environments. This sanitary heavy build epoxy coating provides superior chemical and abrasion resistance and is easy to keep clean.

When combined with MICROBE-X anti-microbial additive, ARMOR-GLAZE provides protection from a wide range of fungi and bacteria. ARMOR-GLAZE is U.S.D.A. approved for incidental food contact use.

ARMOR-GLAZE can be finish coated with V-THANE urethane wall coat for the ultimate chemical, stain and UV light resistance.



ARMOR-GLAZE After



Before



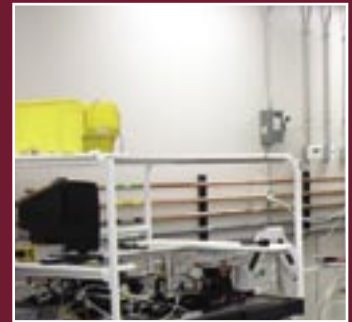
Dairies



Car Washes



Food Processing



Manufacturing



Veterinary



Kennels



Lavatories



Institutional

ARMOR-GLAZE OFFERS UNIQUE BENEFITS

Seamless System ...*No Open Joints – Sanitary*

Non-Porous ...*Easy Cleaning*

High Build ...*Fills and Levels Rough Walls*

Accepts MICROBE-X ...*Protection From Microbes*

Tough ...*Withstands Pressure Washing*

Chemical Resistant ...*Stands Up to Chemicals*

Stain Resistant ...*Stays Light and Bright*

U.S.D.A. Accepted ...*Used for Food Processing*

VSC COLORS

White is standard. Many other color options are available.



WHITE
#CA002



BLACK
#CA003



MEDIUM GRAY
#CA007



CHARCOAL
#CA009



TILE RED
#CA010



MOCHA
#CA011



GREEN
#CA012



BLUE
#CA014



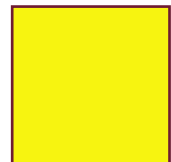
DARK BLUE
#CA015



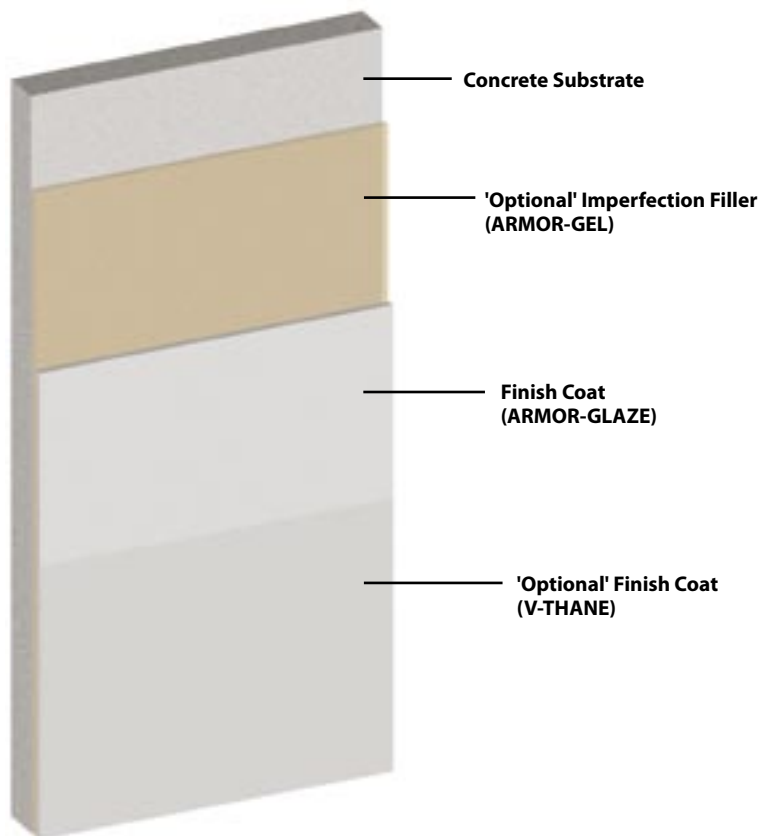
SANDSTONE
#CA016



BEIGE
#CA017



SAFETY YELLOW
#CA020

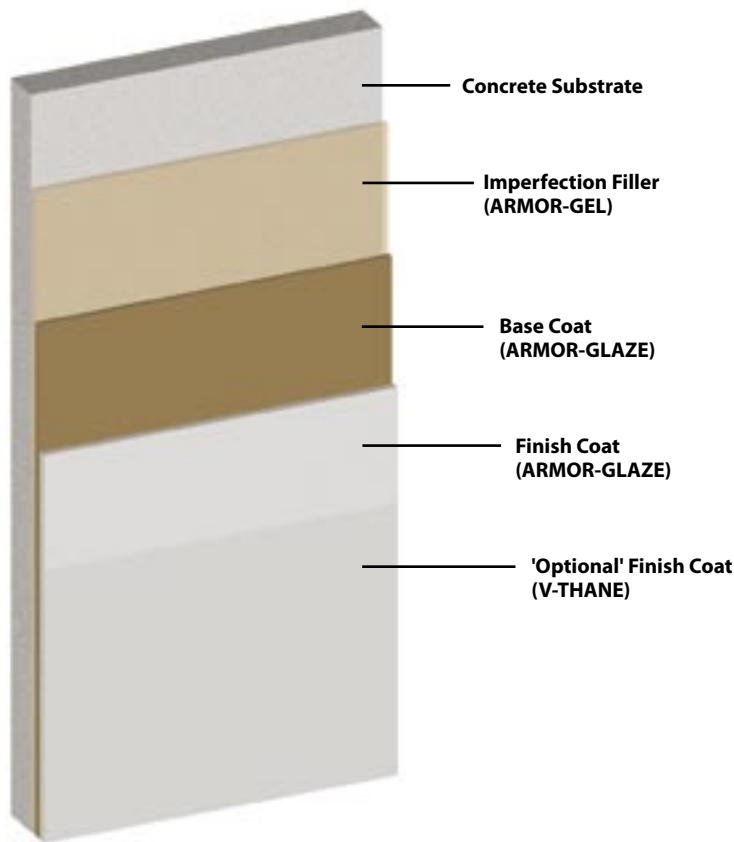


LIGHT DUTY ARMOR-GLAZE WALL SYSTEMS

Light duty systems are cost effective agricultural and industrial coatings that range in thickness from 10 to 13 mils. They can be installed quickly and are ideal where thermal, chemical and physical exposure is mild to moderate.

Applications:

- Dairy Facilities
- Commercial kitchens
- Institutional kitchens
- Light manufacturing
- Lavatories
- Locker rooms
- Dry goods processing
- Warehousing
- Automotive service

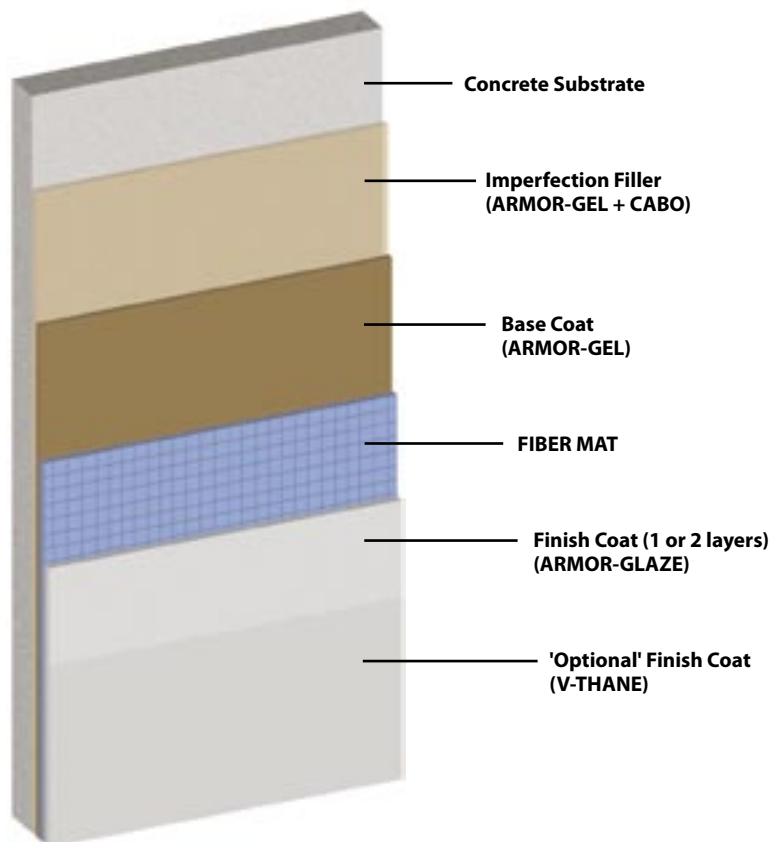


MEDIUM DUTY ARMOR-GLAZE WALL SYSTEMS

Medium duty systems are used where a higher level of protection and performance are required. These systems range in thickness from 20 to 23 mils. This wall coating is ideal for medium duty exposure areas.

Applications:

- Dairy Facilities
- Docks
- Research labs and hallways
- Prison cells
- Healthcare facilities
- Manufacturing
- Car washes
- Kennels



HEAVY DUTY ARMOR-GLAZE WALL SYSTEMS

Heavy duty systems are used where a maximum level of wear protection is essential. These systems combine the unique VSC FIBER MAT to range in thickness from 60 to 100 mils. This system fills and levels wall variations to produce a uniform seamless coating.

Applications:

- Dairy Facilities
- Veterinary hospitals
- Meat and poultry processing
- Slaughterhouses
- Chemical labs
- Beverage manufacturing
- Pulp and paper mills

OUR PROCESS starts with thorough substrate preparation. Our applicators utilize special diamond grinding equipment with 'dust' collectors.

Following preparation, all cracks, seams, pits and imperfections are filled and leveled with ARMOR-GEL. Once the substrate is properly prepared and leveled, the selected ARMOR-GLAZE System is installed. All VSC contractors are trained to maintain a clean zone during the preparation and installation process.

Once completed, our customers have a transformed wall. One that is durable, attractive, light reflective, oil and stain resistant and easy to maintain. All ARMOR-GLAZE Wall Systems come with the VSC Quality Assurance Guarantee.



Before

ARMOR-GEL



FIBER MAT

ARMOR-GLAZE



After

SYSTEM PLANNER

LIGHT DUTY

Product	Typical Coverage (Sq. Ft./Gal.)	Dry Thickness (Approx. Mils)
'Optional' ARMOR-GEL FILL COAT	50	30
ARMOR-GLAZE FINISH COAT	150	10
'Optional' V-THANE WALL COAT	300	3
'Optional' MICROBE-X	Add 8 Oz./Gal. to Top Coat	

MEDIUM DUTY

Product	Typical Coverage (Sq. Ft./Gal.)	Dry Thickness (Approx. Mils)
'Optional' ARMOR-GEL FILL COAT	50	30
ARMOR-GLAZE BASE COAT	150	10
ARMOR-GLAZE FINISH COAT	150	10
'Optional' V-THANE WALL COAT	300	3
'Optional' MICROBE-X	Add 8 Oz./Gal. to Top Coat	

HEAVY DUTY

Product	Typical Coverage (Sq. Ft./Gal.)	Dry Thickness (Approx. Mils)
ARMOR-GEL FILL COAT	50	30
ARMOR-GEL + FIBER MAT	100	50
ARMOR-GLAZE COAT	150	10
'Optional' ARMOR-GLAZE COAT	150	10
'Optional' V-THANE WALL COAT	300	3
'Optional' MICROBE-X	Add 8 Oz./Gal. to Top Coat	

AVAILABILITY

ARMOR-GLAZE*	#AC400	1.5 Gal. Kit
ARMOR-GLAZE*	#AC400-3	3 Gal. Kit
ARMOR-GLAZE FAST*	#AC400B	1.5 Gal. Kit
ARMOR-GLAZE FAST*	#AC400B-3	3 Gal. Kit
ARMOR-GEL	#AC630	1.5 Gal.
ARMOR-GEL	#AC630-3	3 Gal.
V-THANE WALL COAT*	#UG320V	1.5 Gal.
V-THANE WALL COAT*	#UG320V-3	3 Gal.
FIBER MAT	#FM241	1 Roll (4'x180')
ORICIL (CABO)**	#TS20050	10 Lbs.

*White or specify color

**Thickening additive for ARMOR-GEL used to fill cracks, joints and seams.



VANBERG SPECIALIZED COATINGS

CONCRETE REPAIR & PROTECTION PRODUCTS

"Products and Systems for the Coatings Industry Since 1989"

P.O. Box 19414, Lenexa, KS 66285-9414 (913) 599-5939 FAX: (913) 599-5949
Toll Free: 1-800-874-0631 E-mail: vsc@vanbergcoatings.com Web: www.vanbergcoatings.com